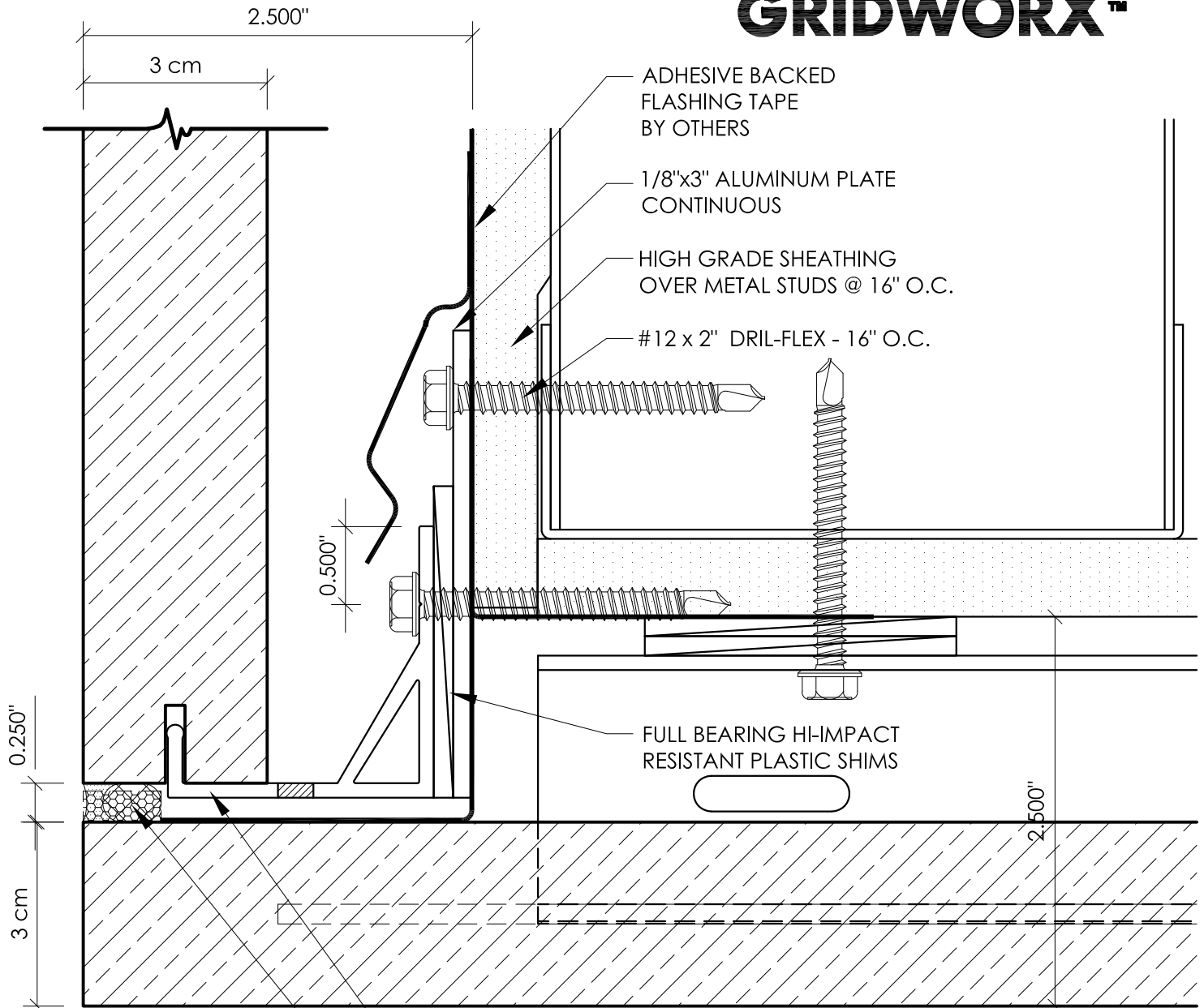


Face Soffit



- ADHESIVE BACKED FLASHING TAPE BY OTHERS
- 1/8"x3" ALUMINUM PLATE CONTINUOUS
- HIGH GRADE SHEATHING OVER METAL STUDS @ 16" O.C.
- #12 x 2" DRIL-FLEX - 16" O.C.

FULL BEARING HI-IMPACT RESISTANT PLASTIC SHIMS

- GRIDWORX J ANCHOR CONTINUOUS
- LOW MODULUS SILICONE W/ OPEN CELL BACKER ROD

INSTALL AT FACE / SOFFIT JOINT
 SILICONE COMPATIBLE WEEP
 BAFFLES @ 24" O.C.

FACE SOFFIT

1/4" JOINTS - STEEL FRAMING SCALE:FULL



Precision Wall Systems, Inc.
 1821 Levee Street
 Dallas, TX 75207
 Phone 214.774.4502
 Fax 214.432.5963
www.gridworxwalls.com