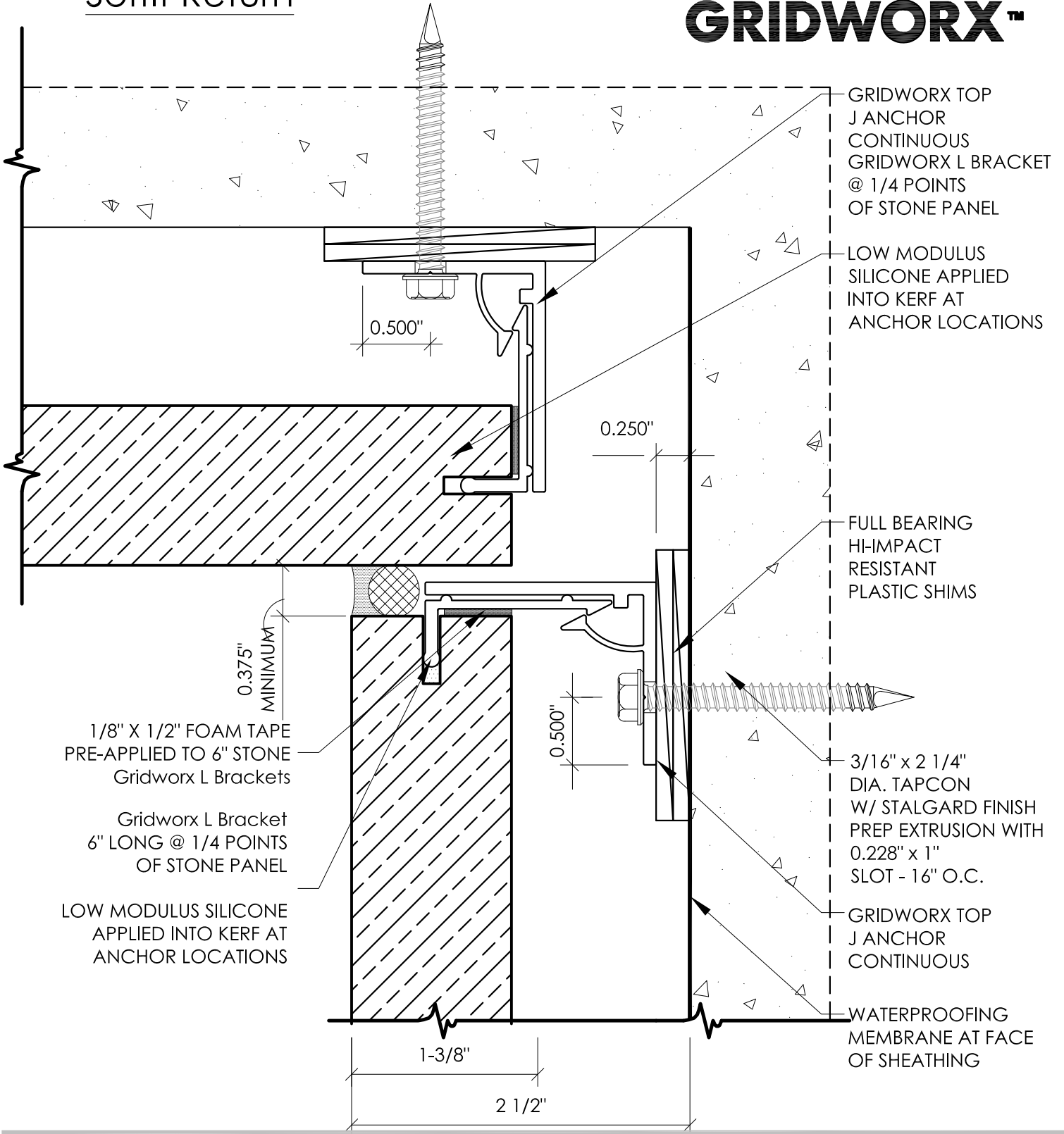
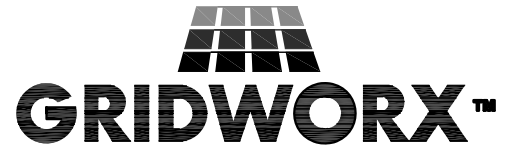


Soffit Return



GRIDWORX TOP J ANCHOR CONTINUOUS
 GRIDWORX L BRACKET @ 1/4 POINTS OF STONE PANEL

LOW MODULUS SILICONE APPLIED INTO KERF AT ANCHOR LOCATIONS

FULL BEARING HI-IMPACT RESISTANT PLASTIC SHIMS

3/16" x 2 1/4" DIA. TAPCON W/ STALGARD FINISH PREP EXTRUSION WITH 0.228" x 1" SLOT - 16" O.C.

GRIDWORX TOP J ANCHOR CONTINUOUS

WATERPROOFING MEMBRANE AT FACE OF SHEATHING

1/8" X 1/2" FOAM TAPE PRE-APPLIED TO 6" STONE Gridworx L Brackets

Gridworx L Bracket 6" LONG @ 1/4 POINTS OF STONE PANEL

LOW MODULUS SILICONE APPLIED INTO KERF AT ANCHOR LOCATIONS

0.375" MINIMUM

0.500"

0.250"

0.500"

1-3/8"

2 1/2"

SOFFIT RETURN TOP J ANCHOR

1/4" JOINTS - CONCRETE

SCALE:FULL



Precision Wall Systems, Inc.
 1821 Levee Street
 Dallas, TX 75207
 Phone 214.774.4502
 Fax 214.432.5963
www.gridworxwalls.com