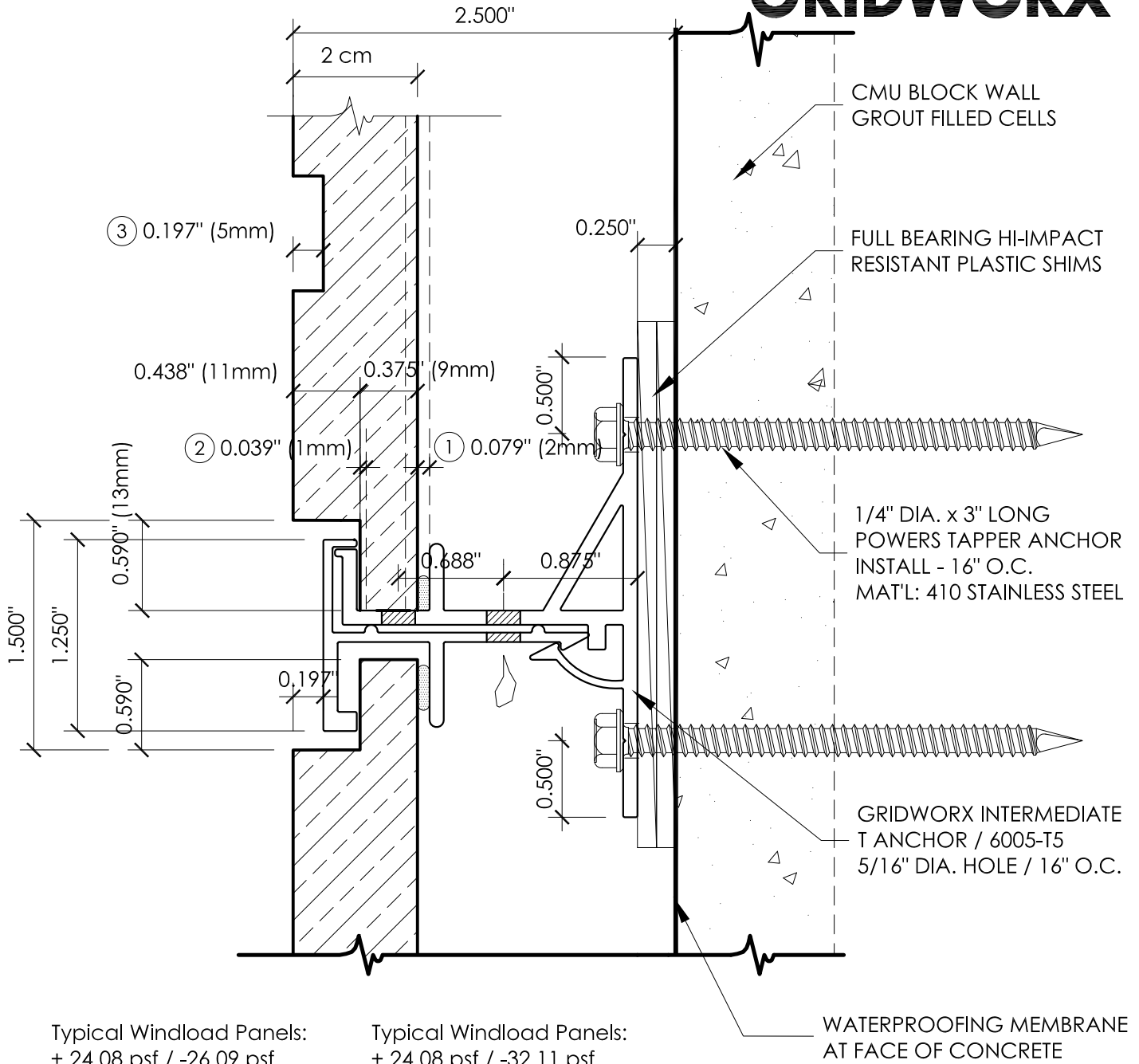
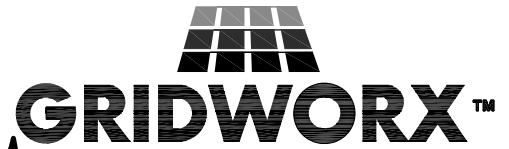


Intermediate T Anchor



- ① Nominal Panel Thickness = 20mm
Allow Tolerance: + 2mm / -2mm
- ② Nominal Rebate @ Anchor = 11mm
Allowable Tolerance: + 1mm / -1mm
- ③ Nominal Rebate @ Reveal = 5mm
Allowable Tolerance: + 0 / -1mm

Stone Design based upon Minimum Flexural Strength
Average per ASTM C880 / ERICA Report No 902:
Dry Perpendicular to Rift Direction = 1276 (Dry)

Reference Report page 1/2 and Example of Loading
Figure @ top of page. This dictates stone panels to be
cut parallel to rift.

INTERMEDIATE T ANCHOR

1 1/2" REVEAL @ BLOCK WALL

SCALE: FULL

DATE	REV	BY	CUST
MARCH 19 2008		JOB	M RESORT SPA CASINO
DECEMBER 21 2007		BY	KJM
		PAGE	67