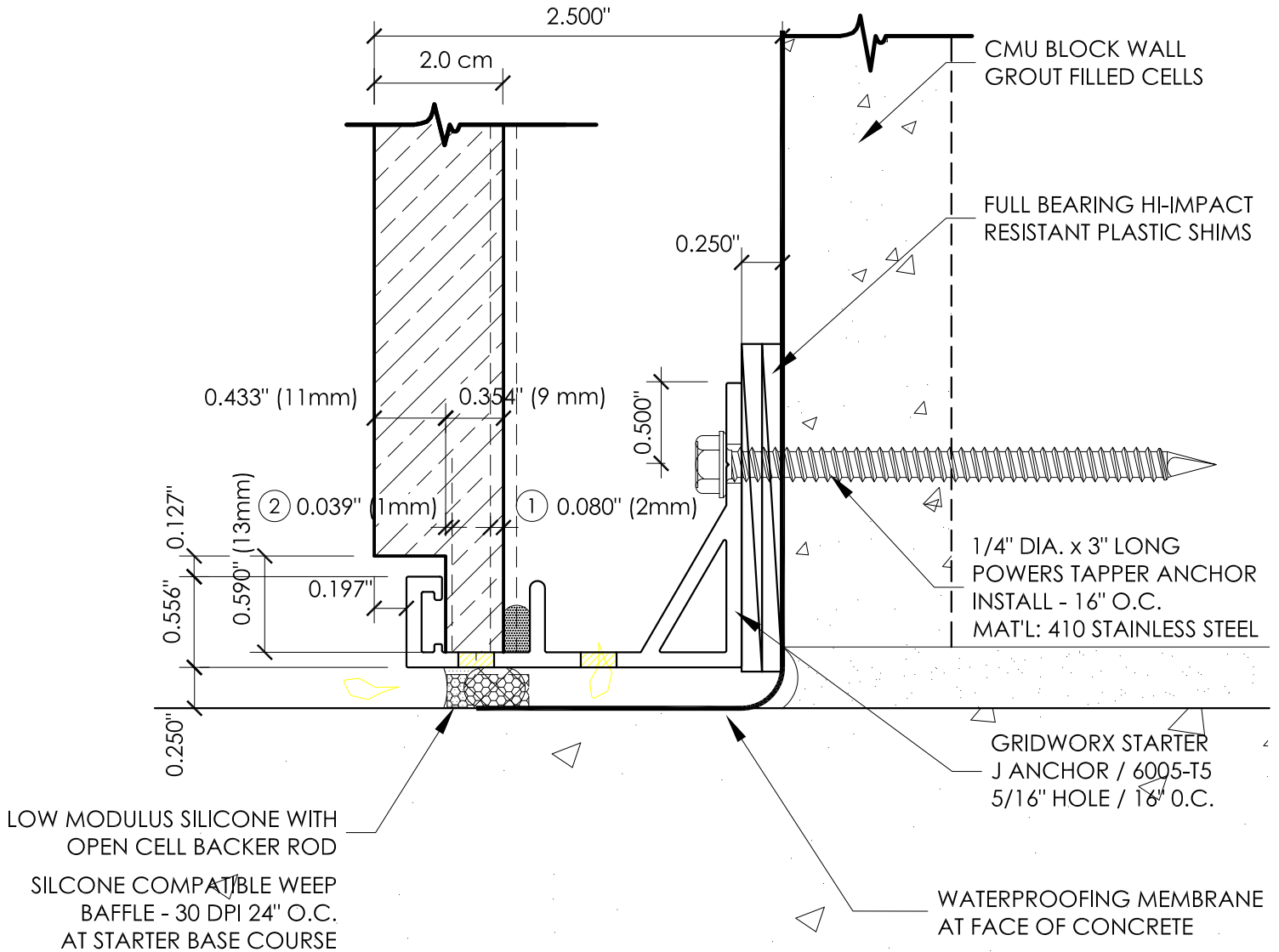
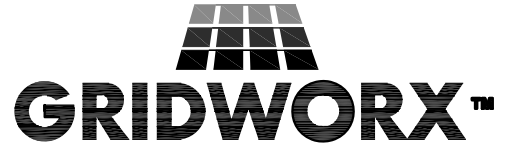


Starter J Anchor



Typical Windload Panels:
+ 24.08 psf / -26.09 psf

Typical Windload Panels:
+ 24.08 psf / -32.11 psf

- ① Nominal Panel Thickness = 20mm
Allow Tolerance: + 2mm / -2mm
- ② Nominal Rebate @ Anchor = 11mm
Allowable Tolerance: + 1mm / -1mm
- ③ Nominal Rebate @ Reveal = 5mm
Allowable Tolerance: + 0 / -1mm

Stone Design based upon Minimum Flexural Strength
Average per ASTM C880 / ERICA Report No 902:
Dry Perpendicular to Rift Direction = 1276 (Dry)

Reference Report page 1/2 and Example of Loading
Figure @ top of page. This dictates stone panels to be
cut parallel to rift.

STARTER J ANCHOR

BLOCK WALL

SCALE: FULL

DATE	REV	CUST	MARNELL CORRAO
DATE	REV	JOB	M RESORT SPA CASINO
DATE	REV	BY	KJM
DATE	REV	PAGE	66