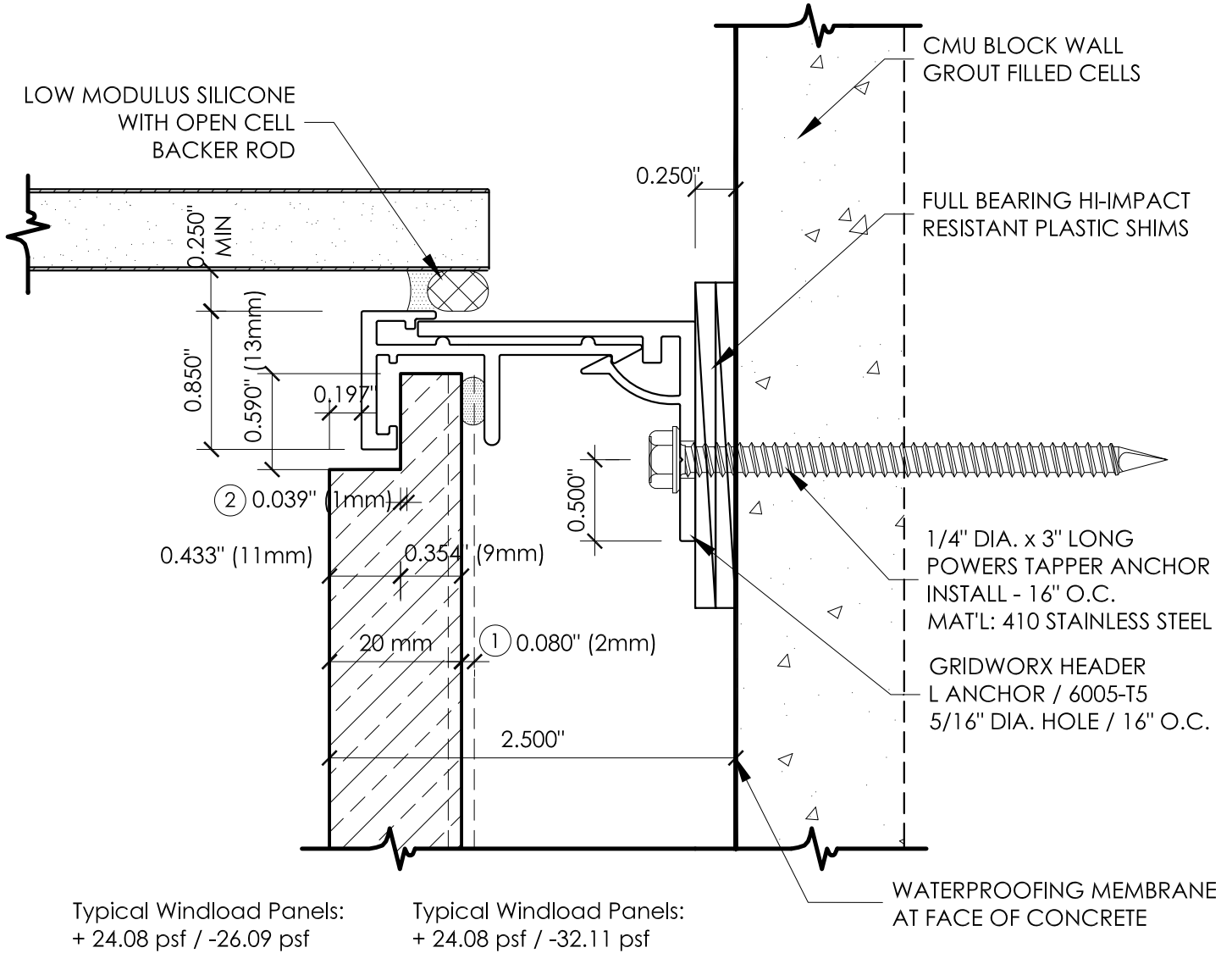


Top J Anchor



- ① Nominal Panel Thickness = 20mm Allow Tolerance: + 2mm / -2mm
- ② Nominal Rebate @ Anchor = 11mm Allowable Tolerance: + 1mm / -1mm
- ③ Nominal Rebate @ Reveal = 5mm Allowable Tolerance: + 0 / -1mm

Stone Design based upon Minimum Flexural Strength Average per ASTM C880 / ERICA Report No 902: Dry Perpendicular to Rift Direction = 1276 (Dry)

Reference Report page 1/2 and Example of Loading Figure @ top of page. This dictates stone panels to be cut parallel to rift.

TOP L ANCHOR

BLOCK WALL

SCALE: FULL

DATE	REV	BY	CUST
		KJM	MARNELL CORRAO
DATE	REV	BY	JOB
DECEMBER 21 2007		KJM	M RESORT SPA CASINO
			PAGE
			68