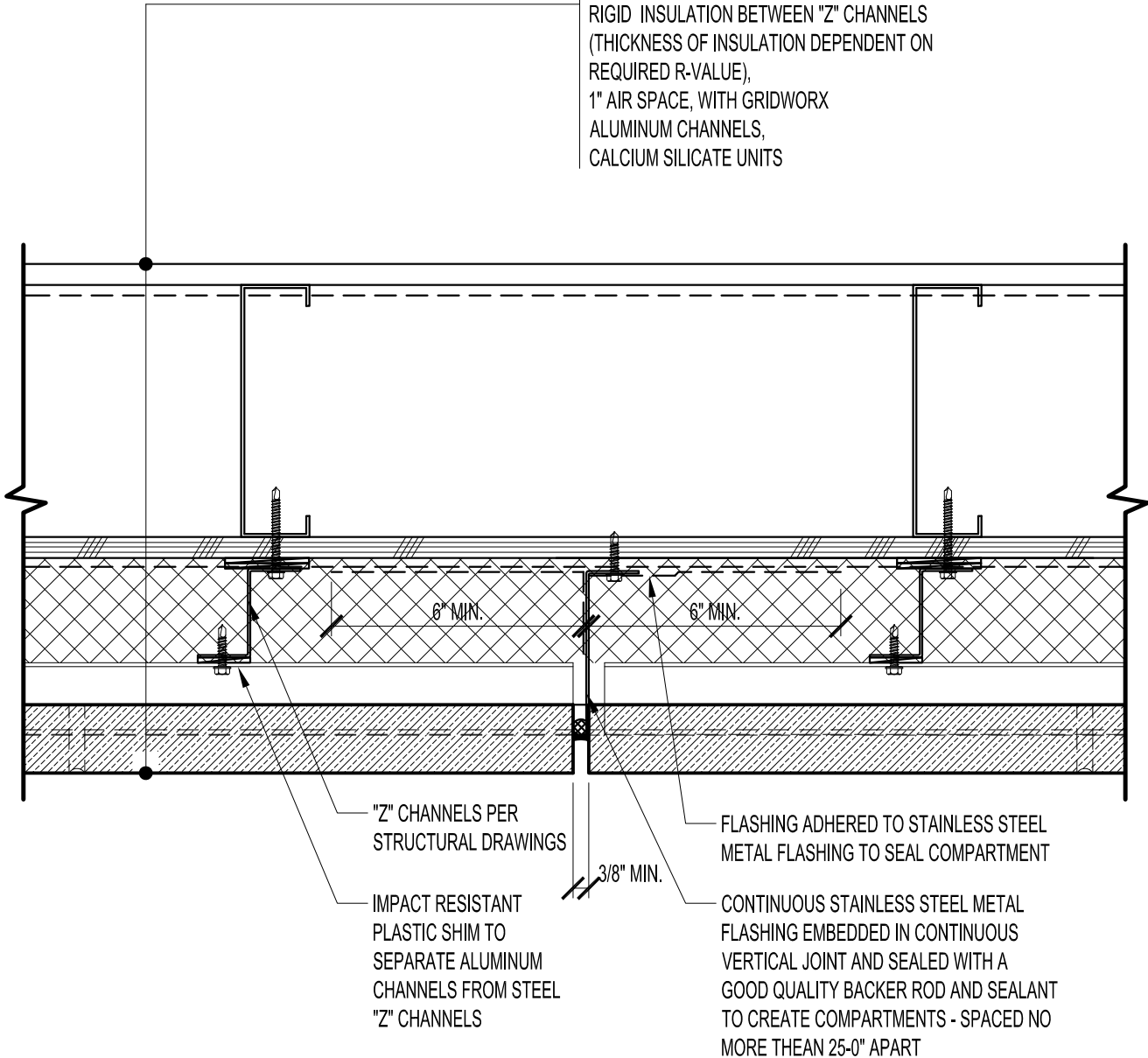


GYPSUM WALLBOARD,  
 VAPOR RETARDER,  
 STEEL STUD WALL,  
 EXTERIOR GRADE SHEATHING,  
 100% CONTINUOUS AIR BARRIER MEMBRANE,  
 RIGID INSULATION BETWEEN "Z" CHANNELS  
 (THICKNESS OF INSULATION DEPENDENT ON  
 REQUIRED R-VALUE),  
 1" AIR SPACE, WITH GRIDWORX  
 ALUMINUM CHANNELS,  
 CALCIUM SILICATE UNITS



**Z CHANNEL PLAN**  
 TYPICAL COMPARTMENTALIZATION AND  
 MOVEMENT JOINT DETAIL

SCALE:1:4



Precision Wall Systems, Inc.  
 1821 Levee Street  
 Dallas, TX 75207  
 Phone 214.774.4502  
 Fax 214.432.5963  
[www.gridworxwalls.com](http://www.gridworxwalls.com)